

Surveyed and platted April 3<sup>d</sup> 1837  
by Benoni Lockwood  
Scale 100 ft to an inch.

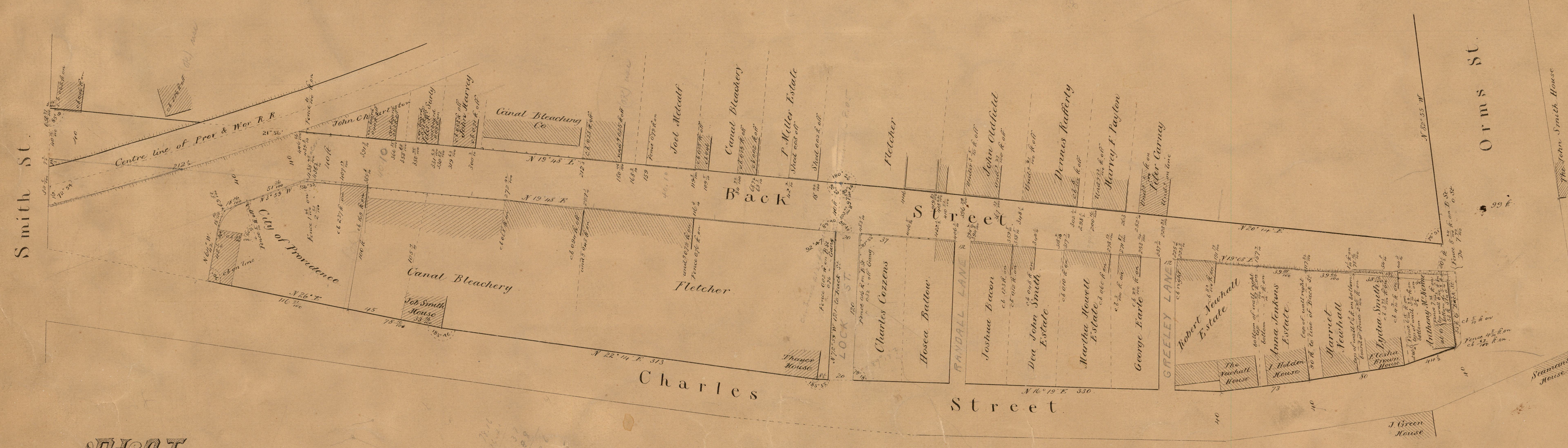
COMPARED

Alfred H. Combs

CITY ENGINEER'S OFFICE.

STREET LINE DEPT.

Nov. 15, 1852



**PLAN OF  
BACK STREET**

made & surveyed under the direction of  
the St Commrs<sup>s</sup> Nov 15th 1852  
by Schubarth & Maines

Scale 50 ft to an inch  
Measure

We certify that we have caused the above plat to be made showing  
the lines of Back Street as defined by us agreeably to an order from  
the Board of Aldermen dated Oct 11th 1852  
Providence Nov 29th 1852

OFFICE No. 330  
DRAWER " 63  
SHEET " A-10

Asa Pierce  
S. B. Cushing  
Cyrus Fisher  
Street Commissioners